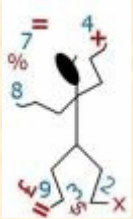


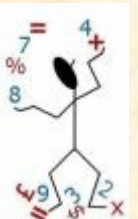
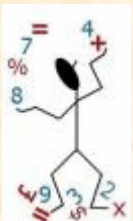
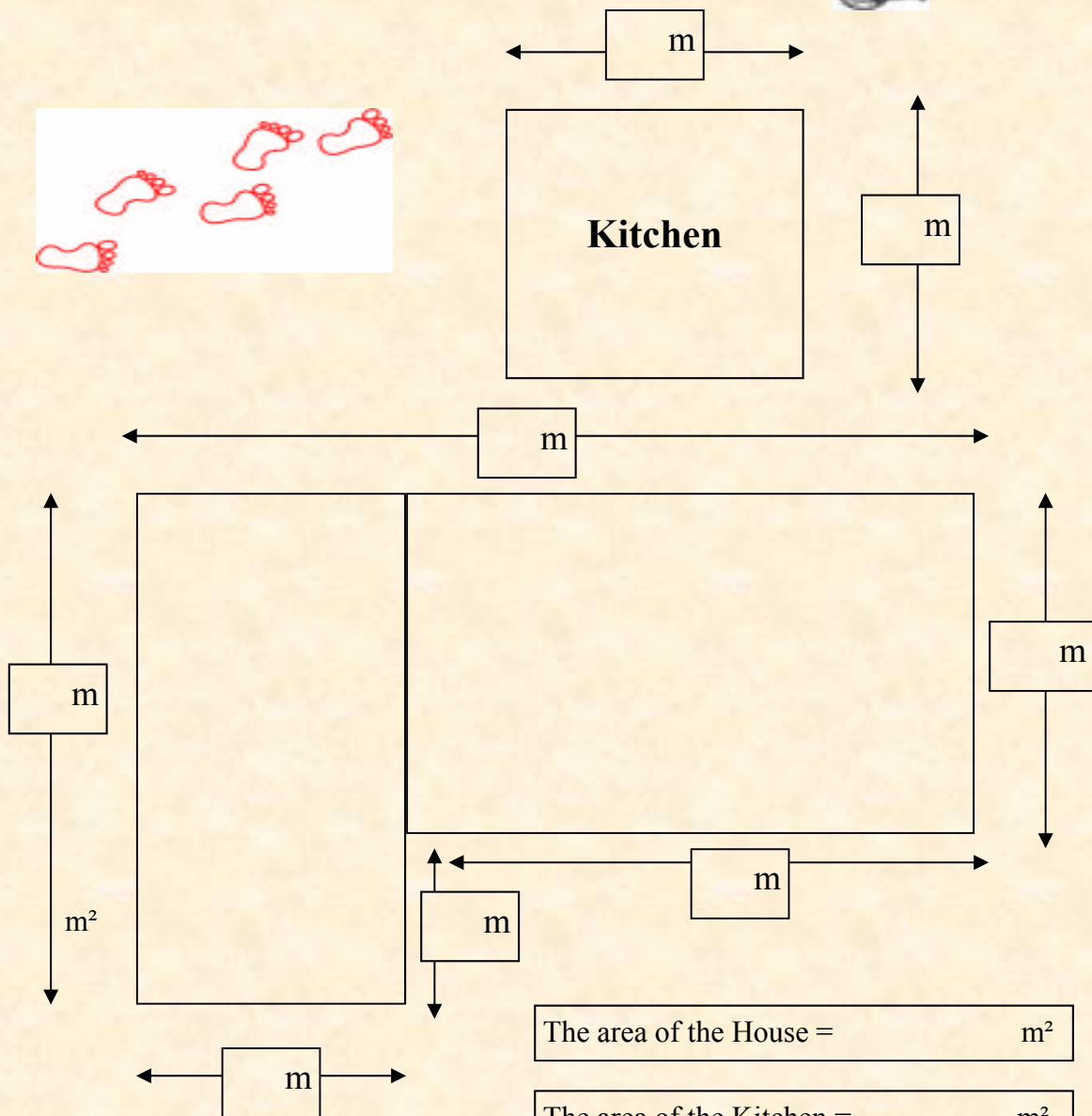
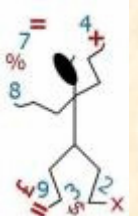


# Blakesley Hall Maths Activities

You will need a click wheel to record measurements on the plan of the Tudor House below.



Measure from the outside.

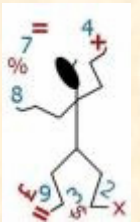
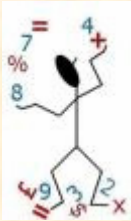


$m^2$  = square metres





You will need an instrument called a clinometer and a click wheel.

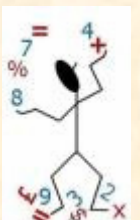
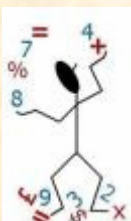


Measure a distance of 10 metres from the wall of the house and aim the clinometer at top of the roof. Write down the angle shown on the clinometer.

Go back to school and try to work out how tall the house is using the measurements you already know!



Walk around the outside of the house. The vertical 'stripe' pattern on the ground floor is called close studding.



In your groups, discuss the best way to estimate the number of studs there are on the ground floor.

Now count them!  
Were you right?

